

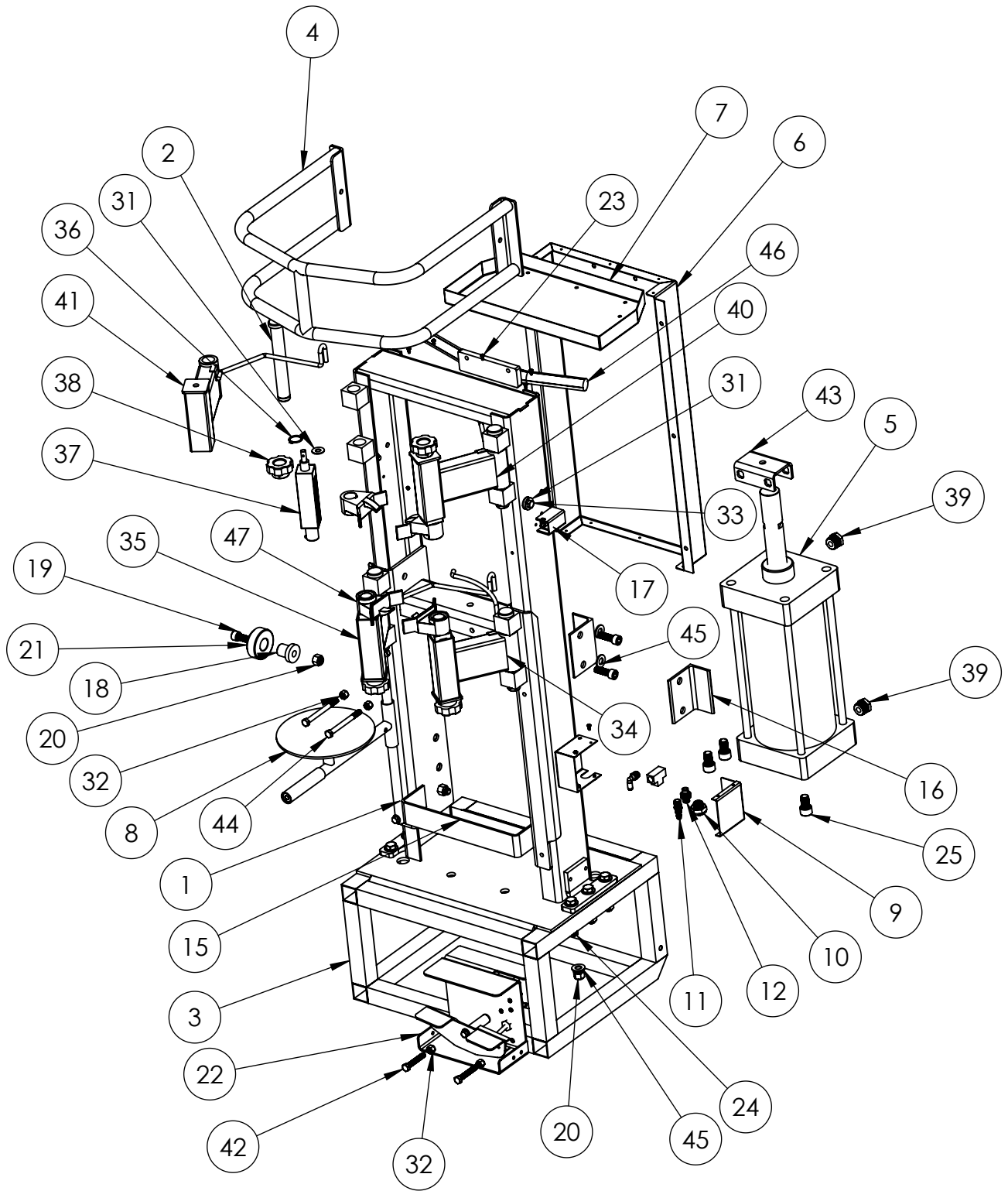
ITEM NO.	PART NUMBER	DESCRIPTION	QTY.
1	DB-8000-009	VERT CHANNEL ASSY	1
2	DB-8000-014	PIN	4
3	DB-8000-023	BASE ASSY	1
4	DB-8000-039	SAFETY CAGE	1
5	DB-8000-006 ASSY	160 x 250 CYLINDER	1
6	DB-8000-045	COVER REAR	1
7	DB-8000-046	TOOL TRAY	1
8	DB-8000-050	STRUT SUPPORT WELDMENT	1
9	DB-8000-060	COVER	1
10	LM-200-BH FITTING	1/4 NPT-3/4-16 THD	1
11	1030	QUICK DISCONNECT 1/4 NPT	1
12	108-60	CHECK VALVE 1/4 NPT	1
13	LM-200-BRASS T	AIR LINE TEE 1/4 NPT	1
14	.25 x .25NPT ELBOW	.25 TUBE X .25NPT ELBOW	1
15	DB-8000-008	VERT SLIDE ASSY	1
16	DB-8000-067	ANGLE STOP	2
17	108-75	VALVE VENT	1
18	DB-8000-064	PIVOT	4
19	.5-13 X 2.0 SHCS	1/2-13 X 2.0 SHCS	4
20	.5-13 NYLOCK NUT	1/2-13 NYLOCK NUT	10
21	DB-8000-065	ROLLER	4
22	DB-7000-359	FOOT VALVE ASSY	1
23	#8 x .375 LG PPHSMS	#8 X .375 LG PPHSMS	9
24	.5-20 x 3.0 HHCS GRADE 5	.5-20 X 3.0 HHCS GR 5	6
25	M16-2 X 25MM SHCS	M16-2 X 25MM SHCS	4
26	BHCS 25-20 X 375	BHCS .25-20 X .375	6
27	.5-13 X 1.5 SHCS	.5-13 X 1.5 SHCS	4
28	312-18x1 HHCS	5/16-18 X 1 HHCS	2
29	.312 FLT WASHER	5/16 FLT WASHER	2
30	312 LOCK WASHER	5/16 LK WASHER	2
31	.375 FLT WASHER	3/8 FLT WASHER	10
32	.375-16 HEX NUT NYLOCK	3/8-16 HEX NUT NYLOCK	6
33	.375-16 X 1.25 LG HHCS	3/8-16 X 1.25 HHCS	2
34	DB-8000-072	LOWER PIVOT ARM ASSY RH	1
35	DB-8000-073	LOWER PIVOT ARM ASSY LH	1
36	SNP RING 1" DIA EXT	SNP RING 1" DIA EXT	4
37	8000-14	ADJUSTING SCREW	4
38	CR-30-B	ADJUSTING KNOB	4
39	BUSHING	BUSHING 3/4NPTM X 1/4NPTF	2
40	DB-8000-076	UPPER PIVOT ARM	1
41	DB-8000-075	UPPER PIVOT ARM	1
42	.375-16 X 2.25 LG HHCS	3/8-16 x 2.25 HHCS	2
43	DB-8000-078	CHANNEL NUT WELDMENT	1
44	375-16 X 4 INCH HHCS GR 5	3/8-16 x 4 HHCS GR 5	2
45	FW 0.5	FLAT WASHER 1/2"	16
46	DB-8000-083	HANDLE WELDMENT	1
47	8000-13	SINGLE FINGER CLAMP	4

**PROPRIETARY AND CONFIDENTIAL**  
 THE INFORMATION CONTAINED IN THIS DRAWING IS THE SOLE PROPERTY OF QSP. ANY REPRODUCTION IN PART OR AS A WHOLE WITHOUT THE WRITTEN PERMISSION OF QSP IS PROHIBITED.

		UNLESS OTHERWISE SPECIFIED:	NAME	DATE
		DIMENSIONS ARE IN INCHES TOLERANCES: FRACTIONAL ± .03" ANGULAR: MACH ±.1 BEND ±1° TWO PLACE DECIMAL ±.01 THREE PLACE DECIMAL ±.005	DRAWN PJA	9/20/2013
		INTERPRET GEOMETRIC TOLERANCING PER: ANSI Y14.5	CHECKED	
		MATERIAL <b>ASSY</b>	ENG APPR.	
		FINISH	MFG APPR.	
			Q.A.	
			COMMENTS:	
A	ADDED -075, -076			
REV LEVEL	CHANGE			
	REVISION	DO NOT SCALE DRAWING		



TITLE: <b>STRUT COMPRESSOR</b>		
SIZE <b>A</b>	DWG. NO. <b>DB-8000-010</b>	REV <b>A</b>
SCALE: 1:24	WEIGHT:	SHEET 1 OF 4



**PROPRIETARY AND CONFIDENTIAL**  
 THE INFORMATION CONTAINED IN THIS DRAWING IS THE SOLE PROPERTY OF QSP. ANY REPRODUCTION IN PART OR AS A WHOLE WITHOUT THE WRITTEN PERMISSION OF QSP IS PROHIBITED.

		DIMENSIONS ARE IN INCHES TOLERANCES: FRACTIONAL ± ANGULAR: MACH ± BEND ± TWO PLACE DECIMAL ± THREE PLACE DECIMAL ±			
		MATERIAL			
		ASSEMBLY			
NEXT ASSY	USED ON	FINISH			
APPLICATION		DO NOT SCALE DRAWING			

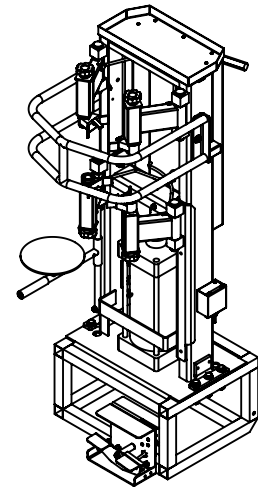
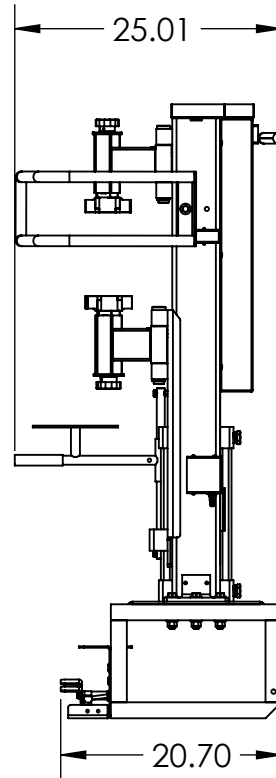
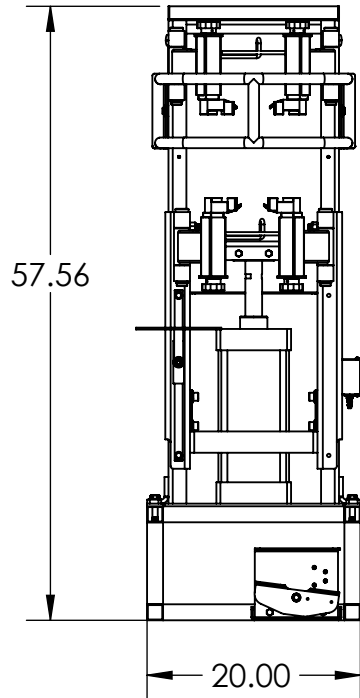
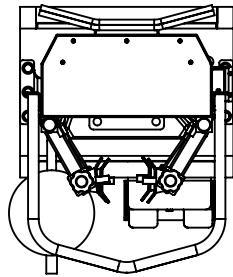
	NAME	DATE
DRAWN	PJA	10/31/2013
CHECKED		
ENG APPR.		
MFG APPR.		
Q.A.		
COMMENTS:		

**QSP**

**STRUT COMPRESSOR**

SIZE	DWG. NO.	REV.
<b>A</b>	<b>DB-8000-010</b>	<b>A</b>
SCALE: 1:24	WEIGHT:	SHEET 2 OF 4





**NOTES:**

1. TOTAL UNIT WEIGHT 230 POUNDS.
2. AIR REQUIREMENTS:  
95 PSI MIN, 120 PSI MAX. REGULATED.
3. SUPPLIED WITH 2 HOLD DOWN BRACKETS.
4. WHEEL KIT OPTIONAL.
5. CYLINDER STROKE 9.5",
6. CYLINDER FORCE 3000 LBS AT 100 PSI.

**PROPRIETARY AND CONFIDENTIAL**  
 THE INFORMATION CONTAINED IN THIS DRAWING IS THE SOLE PROPERTY OF QSP. ANY REPRODUCTION IN PART OR AS A WHOLE WITHOUT THE WRITTEN PERMISSION OF QSP IS PROHIBITED.

			UNLESS OTHERWISE SPECIFIED:		NAME	DATE
			DIMENSIONS ARE IN INCHES	DRAWN	PJA	2/7/2014
			TOLERANCES:	CHECKED		
			FRACTIONAL ± .03"	ENG APPR.		
			ANGULAR: MACH ±.1 BEND ±1°	MFG APPR.		
			TWO PLACE DECIMAL ±.01	Q.A.		
			THREE PLACE DECIMAL ±.005	COMMENTS:		
			INTERPRET GEOMETRIC TOLERANCING PER: ANSI Y14.5			
			MATERIAL			
			<b>ASSY</b>			
			FINISH			
			DO NOT SCALE DRAWING			
REV LEVEL	CHANGE	DATE				
REVISION						



TITLE:  
**STRUT COMPRESSOR**

SIZE	DWG. NO.	REV
<b>A</b>	<b>DB-8000-010</b>	-

SCALE: 1:24	WEIGHT:	SHEET 4 OF 4
-------------	---------	--------------