



Mega Catch™

The New Generation Mosquito Trap

PRO 900 *Series*

PREMIER



Operation Manual

PREMIER Model MCP-900

Important Safety Instructions	1
Introduction	2
Features of Mega-Catch™ Pro 900 Series PREMIER Mosquito Trap	2
Initial Set Up Instructions	3-4
What Your Mega-Catch™ Mosquito Trap Will Do	5
Installing and Siting the Mega-Catch™ Mosquito Trap	5-6
Mosquito Catching Systems	7-8
Using the Liquid Catch Container	7
Using the Catch Bag	8
Fitting of External Skirt	9
Care of Your Trap	10-11
Optional Accessories	12-13
Maintenance and Repair of Your Trap	14-15
Frequently Asked Questions	17
Problem Solving	18
Need Help?	18
Specifications	18
Parts List	19

Important Safety Instructions

- Do not operate the Trap indoors.
- Do not look directly into the UV lights during operation of the Trap.
- Keep children and pets away from the Trap.
- Always disconnect power before cleaning, servicing or inspecting the inside of the Trap.
- To avoid injury from the High-Speed Fan inside the Trap, always disconnect power before opening the Door. Keep the Door locked and remove the Key while the Trap is operating.
- Do not allow the Trap, Power Supply, Power Cord or plug to be immersed in water.
- Do not operate the Trap with a damaged Power Supply, Power Cord or plug.
- Use only the Extension Cord supplied with the Trap, or by your Authorized Distributor or online at www.megacatch.com.
- Ensure Power Cords are placed carefully to avoid causing a tripping hazard.
- Ensure the Trap is properly installed and operated in accordance with this operation manual.

NOTE: We recommend your Mega-Catch™ Mosquito Trap should be used in conjunction with other **sensible mosquito control measures** designed to manage mosquito problems.

Eliminate standing water in low spots, ditches, gutters and similar areas.

Empty or dispose of anything that collects water i.e. tin cans, old tires, buckets, pet dishes, pot plant saucers etc...

Install or repair screens. Some mosquitoes like to come indoors. Keep them outside by having well-fitting screens on both windows and doors.

Keep grass mown and bushes trimmed to deprive mosquitoes of their favorite resting places.

Apply insect repellents when outdoors for extended periods of time. According to the U.S. Centers for Disease Control (CDC), the most effective repellents to use contain one of the following EPA registered active ingredients: DEET (N,N-Diethyl-m-toluamide), Picaridin (KBR 3023) and Oil of Lemon Eucalyptus (p-menthane 3, 8-diol).

Light colored clothing is less attractive to some mosquito species. Wear long sleeves and long pants for added protection.

Introduction

Mosquitoes have been described as the most dangerous creatures on Earth. Aedes mosquitoes may carry yellow fever and dengue fever. Culex mosquitoes may carry several strains of encephalitis (including St. Louis Encephalitis, Eastern Equine Encephalitis and West Nile Virus), and Anopheles mosquitoes may carry Malaria.

Male mosquitoes do not bite. The real risk is from female mosquitoes which bite when in search of blood to provide protein for their eggs.

Scientific research over the past 50 years has shown that female mosquitoes find their prey using a combination of sensory cues including light, shape, color, heat, movement/vibration, sweat and other by-products of human activity. Using that research and with the benefit of extensive field testing (including tests by the United States Department of Agriculture in Gainesville, Florida), Mega-Catch™ has developed one of the world's most advanced mosquito traps: the Mega-Catch™ **Pro 900 Series PREMIER** Mosquito Trap.

There are over 3,500 species of mosquitoes worldwide and your yard could harbor as many as 30 different species. Each species is unique and each is attracted by different combinations of sensory stimuli. Even miniscule changes in those stimuli can mean the difference between catching or not catching a certain species of mosquito. For that reason catching mosquitoes can be compared to fishing. Everyone can do it, but those who are willing to take the time to experiment and learn about the target species will always achieve the best results.

Features of Mega-Catch™ Pro 900 Series PREMIER Mosquito Trap

The Mega-Catch™ **Pro 900 Series PREMIER** Mosquito Trap comes ready to go so you can get started right away simply by pressing the blue ON/OFF switch located on the front of the trap.

Features include:

- Central LED Cluster programmed to illuminate and give the appearance of movement.
- Oscillating ultra violet (U.V.) LED light array spectrally matched to frequencies known to attract many mosquito species.
- High speed fan to maximize capture rates.
- Heating Element with integrated heat mode to subtly alter the infrared signature that attracts many mosquito species.
- Two catch options (catch bag or liquid catch container).

Mosquitoes attracted to the **Pro 900 Series PREMIER** by visual and other cues seek to land on and probe specially designed surfaces and enter the Trap where they are collected in the Catch Bag or Liquid Catch Container.

The Mega-Catch™ **Pro 900 Series PREMIER** Mosquito Trap has been designed for outdoor use only. The **Pro 900 Series PREMIER** can operate unattended for long periods.

Initial Set Up Instructions

Before attempting operation of your **Pro 900 Series PREMIER** Trap, follow these instructions:

1. Remove the box marked Accessories from the carton.
2. Remove the white rectangular packer box.
3. Remove the Trap from the carton.
4. Fit the External Skirt to the outside of the Trap by sliding the skirt on from the top of the Trap so that the opening is directly in front of the Door (see page 9, **Fitting of External Skirt** section).
Note: Failure to position the Skirt correctly may result in a NIL mosquito catch.
5. The **PRO 900 Series PREMIER** is designed to hang or be suspended from a tree or structure using a nylon rope, wire, or the like. Alternatively the trap can be installed on the purpose-built Mega-Catch™ Stand (optional extra available from your Authorized Distributor or online at www.megacatch.com). We recommend a height of around 3 feet(1 metre) from the ground to the top of the Mega-Catch™ Mosquito Trap. However, you may need to adjust the Trap's height depending on the type of mosquitoes you are catching.
6. Your **Pro 900 Series PREMIER** Trap has two mosquito collection methods: a dry-catch system using a Catch Bag and a wet catch system using a Catch Container. In most circumstances the wet-catch system offers superior catch performance to the dry-catch system. The dry-catch system using the Catch Bag is better for mosquito species identification.
7. If you wish to catch mosquitoes using the Catch Bag, then attach the Catch Bag to the base of the Fan inside the Trap. The Catch Bag has an elastic top to facilitate attachment (see page 7, **Mosquito Catching Systems** section).
8. If you wish to catch mosquitoes using the wet-catch system, fill the Liquid Catch Container two-thirds full with fresh water. Add 2 or 3 drops of liquid detergent/soap to break the surface tension of the water. Also add 3 or 4 teaspoons of a non-diet (sugar-based) soda pop or fruit juice. Then place the Liquid Catch Container in the Trap using the locating feet on its base.
9. Reinstall the Door by locating the base of the Door in the Trap and then pushing firmly until Door clicks into place. Lock the Door using one of the two Keys provided with the Trap and then remove the Key. (**NOTE:** Removing and reinstalling the door is designed to require a reasonable amount of force to make it difficult for children).

10. Your **Pro 900 Series PREMIER** Trap comes with a low-voltage Power Supply and a 30 foot(9 metre) low-voltage extension cord with weatherproof connectors. Plug the extension cord into the Trap connection turning the connector clockwise until tight. Plug the extension cord into the power supply cable turning the connector clockwise until tight. Then plug into the power supply. (**NOTE:** The connectors are designed to be a tight fit to ensure that they are weatherproof).
11. Turn on the power. The Trap will take around 2 seconds to initialize and then a blue LED light inside the Trap should pulse to indicate that power is connected. (If it does not, see page 18, **Problem Solving** section). To immediately begin operating your Trap press the blue ON/OFF switch located on the front.
12. When the Trap is operating, the Fan should be running and the U.V. and colored LED lights should be flashing intermittently. If the Trap is not operating correctly then re-read these instructions or see page 18, **Problem Solving** section, or email us at info@megacatch.com.

What Your Mega-Catch™ Mosquito Trap Will Do

While the Mega-Catch™ Mosquito Trap has been designed to catch immediately there is any mosquito activity in the vicinity, it may take as much as 6-8 weeks of use to reduce local populations to the point that breeding cycles are interrupted. Patience and experimentation are the keys to getting the best out of your Mega-Catch™ Mosquito Trap. Subsequent re-infestations will probably occur after rain.

You should not expect to completely get rid of mosquitoes. Mega-Catch™ Mosquito Traps should be used in conjunction with other sensible **mosquito control measures** (see “NOTE” page 1, **Important Safety Instructions** section) designed to manage mosquito problems.

The Mega-Catch™ Mosquito Trap is not designed to compete with humans in close proximity eg. at a barbecue. If you are planning an outdoor function, operate the Trap for several days before the function.

Installing and Siting the Mega-Catch™ Mosquito Trap

Installation of Trap:

Your Mega-Catch™ Mosquito Trap comes fully assembled. To install refer to the instructions on Page 3, **Initial Set Up Instructions** section.

The Initial Set Up Instructions assume that you have decided to install your Mega-Catch™ Mosquito Trap suspended from a tree or structure using a nylon rope, wire, or the like. As mentioned in the **Initial Set Up Instructions** you may need to adjust the Trap's height depending on the type of mosquitoes you are catching.

Your Mega-Catch Mosquito Trap is supplied with a 30 foot(9 metre) low voltage extension cord with weatherproof fittings. To avoid the cord posing a tripping hazard or being damaged, (e.g. by lawn mower) we recommend that, if possible, it be placed 2-3 inches(5-8 cm) underground. This can be easily achieved by using a spade which is inserted into the ground and moved backwards and forwards to create a shallow slit trench into which the cord can be pushed before the ground is replaced by standing on the top of the slit trench.

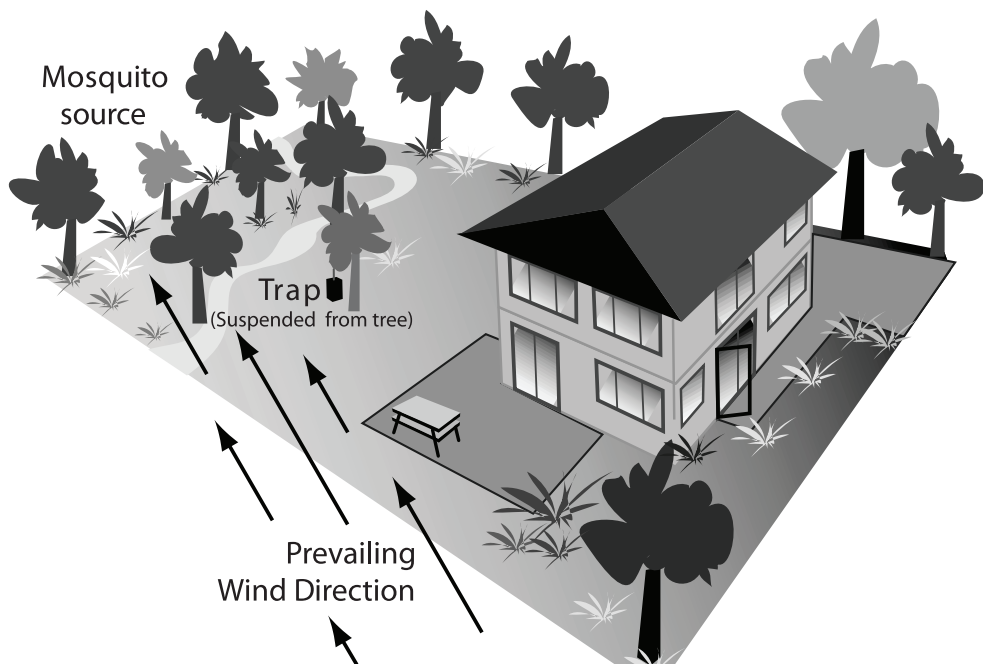


FIG 1 - Trap Positioning

Siting of Trap:

For the best performance from your Mega-Catch™ Mosquito Trap, first determine the primary source of the mosquito nuisance (Mosquitoes breed in wet areas like around streams, marshland, wooded areas and gardens). Then use these rules to site the Trap:

- Rule 1: Place the Trap between the mosquito source and areas of human activity.
- Rule 2: Place the Trap as far away from people and as close to the mosquito source as possible (attract them to the Trap and not to you).
- Rule 3: Place the Trap upwind of the mosquito source but only if you can comply with Rule 1 (mosquitoes sometimes use the wind to navigate).
- Rule 4: Place the Trap in a predominantly shaded area (most mosquitoes avoid direct sunlight).
- Rule 5: Place the Trap in a location protected from rain and strong wind (mosquitoes don't fly in strong winds).
- Rule 6: If severe weather conditions, such as a cyclone, are predicted then store the Trap out of the weather.

Mosquito Catching Systems

Your Mega-Catch™ Mosquito Trap comes complete with a Catch Bag and a Liquid Catch Container. You may choose to collect mosquitoes using either of these systems.

Our research has shown the Liquid Catch Container system to be more effective. This is because when the Mega-Catch™ Mosquito Trap is operated using a Liquid Catch Container, the air plume emanating from the bottom of the Trap is humidity enriched.

Depending on local temperatures, evaporation may mean that it is necessary to replenish water in the Liquid Catch Container weekly or even more frequently. The Catch Bag system requires less frequent attention and therefore may be your preferred mosquito catching system. We recommend the Catch Bag system if your trap is going to be left unattended for any long period of time (e.g. vacation). Smaller biting insects (eg: no-see-ums) are best caught using the Liquid Catch Container because the mesh size on the standard Catch Bag may be too large to capture them (a smaller mesh Catch Bag is available from your Authorized Distributor or online at www.megacatch.com).

Using the Liquid Catch Container

To prepare your Mega-Catch™ Mosquito Trap, follow these steps:

1. Ensure that the Trap is switched off by disconnecting the power (**Attention: High-Speed Fan inside the Trap may cause injury if the power is not disconnected.**)
2. Unlock and remove the Lockable Door.
3. Slide the Liquid Catch Container out from beneath the Fan. This container has locating feet on its base.
4. Fill the container with water until it is approximately two-thirds full. Add 3 or 4 drops of liquid detergent/soap and stir thoroughly. This breaks the surface tension of the water ensuring that mosquitoes drown upon capture.
5. Add 3 or 4 teaspoons of a non-diet (sugar-based) soda pop or fruit juice. This duplicates the fructose content of nectar on which mosquitoes feed.
6. Reinstall the Liquid Catch Container into the Mega-Catch™ Mosquito Trap. Replace and lock the Door and remove the Key for child safety. Reconnect power.
7. Before removing the Liquid Catch Container, remember to disconnect the power to your Mega-Catch™ Mosquito Trap so that the Fan is not operational. Dispose of the contents well away from your dwelling so as to not attract ants.

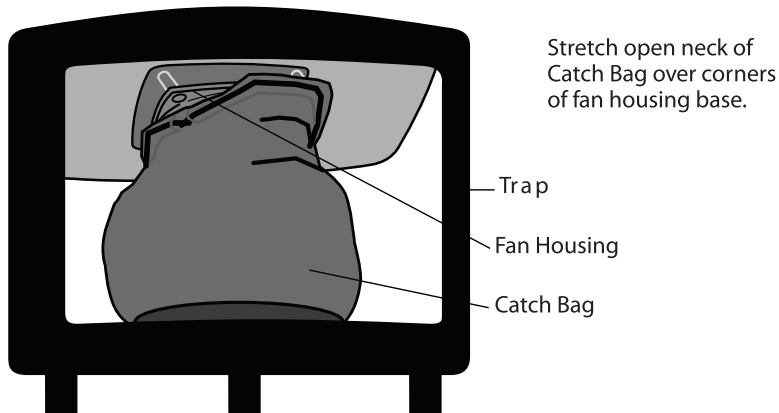
Using the Catch Bag

To prepare your Mega-Catch™ Mosquito Trap, follow these steps:

1. Ensure that the Trap is switched off by disconnecting the power (**Attention: High-Speed Fan inside the Trap may cause injury if the power is not disconnected.**)
2. Unlock and remove the Lockable Door.
3. Reach inside the Trap and stretch the open neck of the Catch Bag around the corners of the base of the Fan just above the Fan Safety Guard (see figure 2). The Catch Bag has an elastic neck to facilitate attachment.
4. Replace and lock the Door and remove the Key for child safety. Reconnect power.
5. Before removing the Catch Bag pull the drawstring tight so that any mosquitoes that remain alive cannot escape. Next disconnect the power to your Mega-Catch™ Mosquito Trap so that the Fan is not operational and then remove the Catch Bag. Crush the top of the Catch Bag down on its base to kill any mosquitoes that do remain alive. Dispose of the contents well away from your dwelling so as not to attract ants.

Mosquitoes collected in the Catch Bag will usually die very quickly without access to moisture. In cooler climates they may live for a longer period. In times of heavy infestations of mosquitoes, it may be necessary to empty the Catch Bag on a regular basis in order to ensure optimum operation of the Trap.

FIG. 2 - Fitting of Catch Bag



Catch Bags should be hand washed in warm soapy water from time to time. Catch Bags are a consumable item and replacements are available from your Authorized Distributor or online at www.megacatch.com.

Fitting of External Skirt

Your Mega-Catch™ Mosquito Trap comes with an External Skirt which fulfils two important functions. First its color and texture provides a visual attractant for many species of mosquitoes. Secondly, it acts as a baffle directing the air plume out of the bottom of the Trap.

There are two methods which you can use to fit the Skirt (Method One is the easiest for most people):

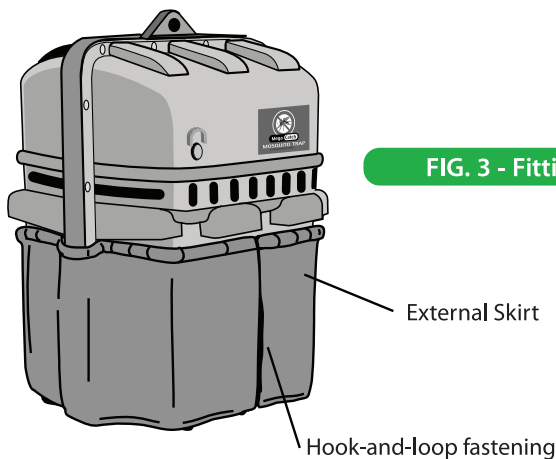


FIG. 3 - Fitting External Skirt

Method One:

1. Place the Mega-Catch™ Mosquito Trap on a table or other flat surface.
2. Slide the Skirt on from the top of the Trap (over 2 corners initially) with the elastic band at the top.
3. The Skirt is properly fitted when the elastic band is seated over the lower horizontal rib, just below the inlet holes (see figure 3). The opening in the Skirt should be located at the front of the Trap so as to facilitate removal of the Door without having to remove the Skirt. The hook-and-loop fastening on this opening should be closed when the Trap is running.

Method Two:

1. Hang the Mega-Catch™ Mosquito Trap from a tree, structure, or the like (see page 3, **Initial Setup Instructions** section - paragraph 5).
2. Slide the Skirt up from the bottom of the Trap (over 2 corners initially) with the elastic band at the top.
3. The Skirt is properly fitted when the elastic band is seated over the lower horizontal rib, just below the inlet holes (see figure 3). The opening in the Skirt should be located

at the front of the Trap so as to facilitate removal of the Door without having to remove the Skirt. The hook-and-loop fastening on this opening should be closed when the Trap is running.

NOTE: Failure to position the skirt correctly may result in a NIL mosquito catch.

The Skirt is not manufactured from a U.V.-resistant material but this will not be an issue if the Trap is operated in shaded conditions as recommended. The Skirt can be reversed should one side begin to fade from exposure to U.V. light. The Skirt is a consumable item and replacements can be obtained from your Authorized Distributor or online at www.megacatch.com.

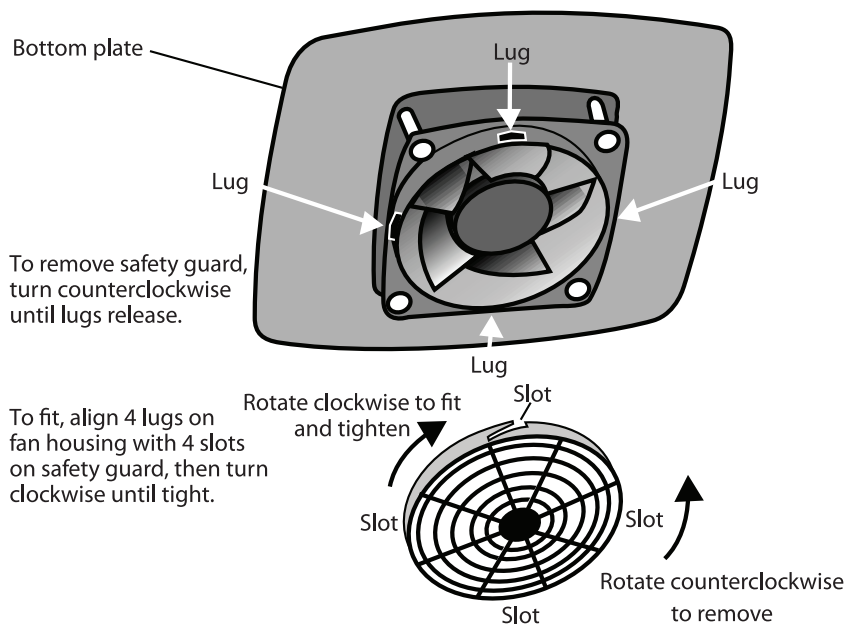
Care of Your Trap

Your Mega-Catch™ Mosquito Trap requires very little maintenance. The Catch Bag and Liquid Catch Container should be cleaned and washed when required.

Heavy catches of mosquitoes may result in a build-up of material in the internal casing and blade tips of the Fan. There may also be a build-up of material on the Fan Safety Guard. If this happens use the following cleaning technique:

1. Ensure the power to your Mega-Catch™ Mosquito Trap is disconnected. **(Attention: High-Speed Fan inside the Trap may cause injury if the power is not disconnected.)**
2. Take the trap down from its hanging location e.g. down from the tree, structure, or the like.
3. Unlock and remove the Lockable Door. Then lay the Trap on its side with the Door opening being face up.
4. Reach inside the Trap and remove the Fan Safety Guard (attached to base of Fan) by turning it counterclockwise (see figure 4).
5. Using a small sponge or toothbrush and warm soapy water, reach into the Trap and carefully clean the inside casing of the Fan and the Fan Blades.
6. Ensure that water is not allowed to enter into the Fan Motor. Never hose water into the Fan.
7. Clean and then replace the Fan Safety Guard.
8. Leave the Trap to dry for at least 24 hours before reinstalling and recommencing operation.

FIG. 4 - Removal of Fan Safety Guard



The casing of your Mega-Catch™ Mosquito Trap is made from polypropylene, which is extremely strong and durable.

In order to prolong the life of your Mega-Catch™ Mosquito Trap store it in a dry place when not in operation. Your Mega-Catch™ Mosquito Trap should be serviced at the end of each season (see page 14, **Maintenance and Repair of Your Trap** section).

Optional Accessories

The following Optional Accessories can be obtained from your Authorized Distributor or online at www.megacatch.com.

1. Mega-Catch™ Mosquito Lures

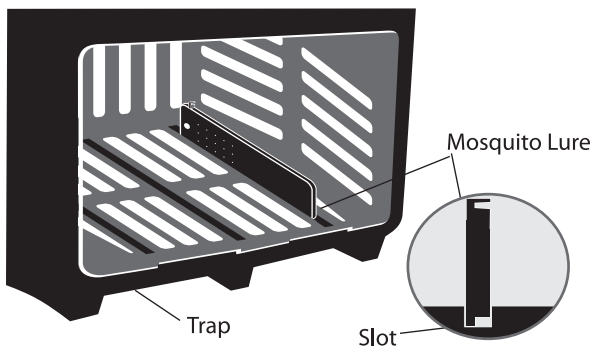
Mega-Catch™ mosquito lures have been specially formulated by Mega-Catch™ to increase capture rates of nuisance mosquitoes, sand flies, black flies and biting midges (no-see-ums).

NOTE: There are over 3,500 species of mosquitoes worldwide. Mega-Catch™ mosquito lures can improve the rate of capture of some mosquito species. Other species, may not be overly attracted. You should determine what is best in your area by experimenting with and without a Mega-Catch™ mosquito lure in place.

To install or replace a Mega-Catch™ mosquito lure:

1. Ensure the power to your Mega-Catch™ Mosquito Trap is disconnected.
2. Unlock and remove the Lockable Door.
3. Remove the Mega-Catch™ mosquito lure from its pouch and be careful not to touch the exposed holes on its surface. Place the lure inside the Trap in the position shown in figure 5.1 below. Replace and lock the Door and remove the Key for child safety. Reconnect power. Wash your hands after this procedure has been completed.

FIG. 5.1 – Placement Position for Mega-Catch™ Mosquito Lure



Place Mega-Catch™ mosquito lure in the trap as shown.

Mega-Catch™ mosquito lures should be effective for up to 30 days depending on weather conditions. Mega-Catch™ mosquito lures are a consumable accessory item and can be obtained from your Authorized Distributor or online at www.megacatch.com.

NOTE: Mega-Catch™ mosquito lures may not be available yet in your country for regulatory reasons.

ATTENTION: Keep Mega-Catch™ mosquito lures out of reach of children. Read directions and Important Safety Instructions carefully before use.

2. Battery Terminal Power Cable

The Mega-Catch™ Mosquito Trap can be operated from a 12-volt car battery as a power source using a factory-approved Power Supply Cable complete with positive and negative alligator clips.

3. Cigarette Lighter/Car Accessory Terminal Cable

The Mega-Catch™ Mosquito Trap can be operated from your vehicle's accessory terminal using a factory-approved Accessory Cable.

4. Extension Cord

The Mega-Catch™ Mosquito Trap comes with a 30 foot(9 metre) low voltage Extension Cord. The Trap can be operated with multiple Extension Cords(30 or 60 foot[9 or 18 metre] options available) connected together up to a maximum range of 120 feet(36 metres) from the power source.

5. Weather Proof Cover

To shelter your trap from the weather when not in use a Mega-Catch™ Weather Proof Cover is available.

6. Fine Mesh Catch Bag

A Mega-Catch™ Fine Mesh Catch Bag can be used when trying to capture very small biting insects such as no-see-ums.

7. Stand

The Mega-Catch™ Mosquito Trap can be installed on a purpose-built factory-approved Stand (see figure 5.2).

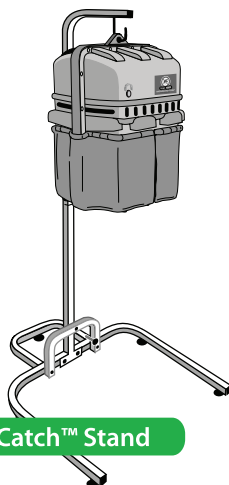


FIG. 5.2 - Mega-Catch™ Stand

Maintenance and Repair of Your Trap

Opening the two halves of the Mega-Catch™ Mosquito Trap will be necessary for the annual service (at the end of each season, the Internal Plates, reflective Heater Element and Fan should be cleaned using warm soapy water and allowed to dry thoroughly).

Opening the Trap (see to figure 6):

ATTENTION: Always disconnect the power to your Mega-Catch™ Mosquito Trap before opening the Trap.

The two halves of the Trap are held together with 12 stainless-steel screws and nuts - six facing one way and six the other way.

Place the Trap on a table ensuring the blue ON/OFF switch located on the front of the trap is on the side facing down. Remove the six screws facing toward you using a Phillips screwdriver.

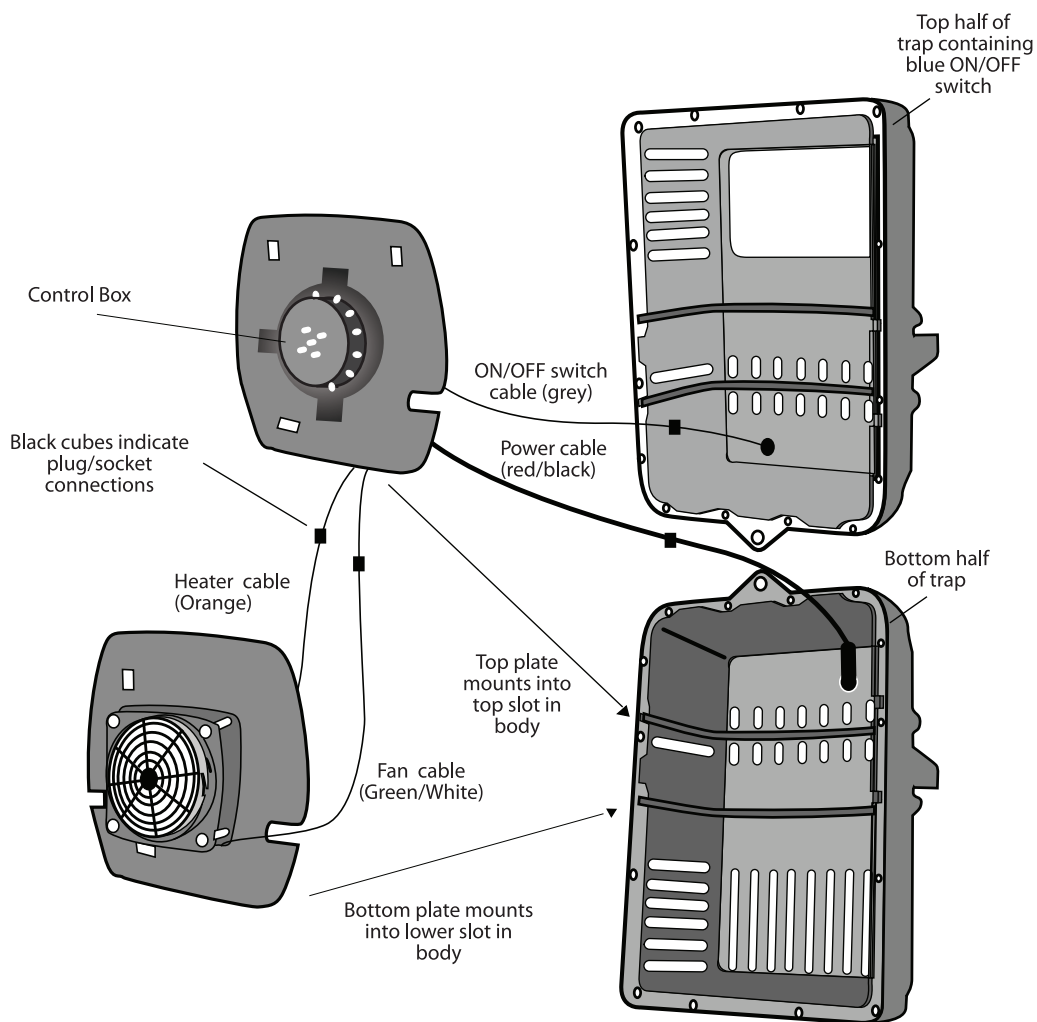
Then turn the Trap over (so that it is "blue ON/OFF switch side" up) and remove the remaining six screws.

Then lift the top half of the Trap away from the bottom half as if it was hinged at the top. The top half should now be "blue ON/OFF switch side" down on the table and still connected to the bottom half by electrical cables.

The Top Plate holds the Control Box (underside of Top Plate).

The Bottom Plate holds the reflective Heater Element (upperside of Bottom Plate) and the Fan (underside of Bottom Plate).

FIG. 6 – Opening the Pro 900 Series PREMIER Trap



Reinstallation of Plates:

You should not have any reason to remove the plates from the Trap. If however you do, merely slot the plates back into the ribs so that the Control Box is on the under-side of the Top Plate and the Fan is on the under-side of the Bottom Plate. There are arrows on each plate that point to the bottom half of the Trap (i.e. the half that does not contain the blue ON/OFF switch). To aid with reassembly there are also colored locator dots on the top of the plates and inside the rear of the trap. Align the green dot on the Top Plate with the green dot inside the trap rear and the yellow dot on the Bottom Plate with the yellow dot inside the trap rear.

Connection of Wires:

You should not have any reason to remove any of the electrical connections. If however you do you should note all electrical connections are by push-in pin connectors. Cables are color coded so it is easy to determine which plug connects to which socket (see figure 6).

Re-assembly of Trap:

Fitted to the groove around the top inner surface of the Trap is a rubber seal. This seal pushes into place for weather protection and should be reinstalled prior to final assembly of the Trap. The seal is formed to the shape of the trap. Check the seal is undamaged before it is reinstalled and the Trap is re-assembled.

With the Top and Bottom Plates in place replace the "blue ON/OFF switch side" or top half of the Trap ensuring that each plate slots into the locating ribs. The 12 screw holes should now be aligned for replacement of the screws. Carefully screw in the screws.

NOTE: Do not overtighten the screws. This could cause the nuts to rotate and damage the pre-formed hexagonal pockets in the plastic housing.

Frequently Asked Questions

1. How soon should the Mega-Catch™ Mosquito Trap begin to catch mosquitoes?

While the Mega-Catch™ Mosquito Trap has been designed to catch immediately there is any mosquito activity in the vicinity, it may take as much as 6-8 weeks of use to reduce local populations to the point that breeding cycles are interrupted. Subsequent re-infestations will probably occur after rain.

2. Will my Mega-Catch™ Mosquito Trap get rid of all the mosquitoes in the area?

No. There is no single silver-bullet to eliminate mosquitos. The best you can do is devise an effective mosquito management plan for your area, using the best available control strategies, including one or more Mega-Catch™ Mosquito Traps.

3. How often do I need to operate my Mega-Catch™ Mosquito Trap?

The Mega-Catch™ Pro 900 Series PREMIER Mosquito Trap is designed to operate 24 hours a day during the mosquito season. If your mosquito problem only involves biters around dusk and dawn then you may wish to only operate the Trap between 7pm and 11pm and 4am and 8am using a standard wall outlet 24 hour timer switch (available from most hardware stores).

4. How many traps should I buy for around my house?

This depends on the size of your property. Generally we recommend one or two Traps depending on the number and location of mosquito breeding areas on your property. A Mega-Catch™ Pro 900 Series PREMIER Mosquito Trap can, in favorable weather conditions, attract mosquitoes from up to around 100 feet(30 metres) away.

5. Will Mega-Catch™ Mosquito Traps catch biting flies?

In addition to mosquitoes the Mega-Catch™ Pro 900 Series PREMIER Mosquito Trap will catch sandflies, black flies and biting midges (no-see-ums) and many other types of biting insect.

6. What should I do if my Trap isn't catching mosquitoes?

First check that your trap is operating properly, ie the lights and fan are working and the external skirt has been positioned correctly. Secondly remember that catching mosquitoes is like fishing. There are over 3,500 mosquito species worldwide (and probably as many as 30 species in your locality) so you may need to experiment to optimize the performance of the trap in your location. See separate sheet headed "Mosquito Trap Optimization" for recommendations on optimizing the performance of your trap. Finally, if you are still having problems email us at info@megacatch.com.

7. Does my Mega-Catch™ Mosquito Trap use much power?

No. When operating , the Mega-Catch™ Pro 900 Series PREMIER Mosquito Trap uses less power than a 40 Watt light bulb

Problem Solving

DESCRIPTION of PROBLEM	CHECKS
Trap fails to operate	Check that the Trap is turned on (see page 3, Initial Set Up Instructions section).
	Check that the Power Cable is properly connected to both the Trap and the mains, and that the power is switched on. Try plugging the Trap into a different wall socket power outlet.
	Check that the power cable has not been damaged, e.g. by a lawn mower or animals (squirrels, dogs or racoons etc...).
Lights in the Trap come on but the Fan fails to operate	Check whether there has been a build up of material in the Fan and/or Fan Safety Guard which is preventing the Fan blade from turning (see page 10, Care of Your Trap section).

If these steps fail then email us at info@megacatch.com - or call the Service Centre number shown on the separate Warranty Certificate.

NOTE: Do not attempt to access the internal electronic components of your Mega-Catch™ Mosquito Trap. Opening of sealed units will void your warranty.

Need Help?

For service, repair or any questions concerning Mega-Catch™ products, email us at info@megacatch.com - or call the Service Centre number shown on the separate Warranty Certificate. Do NOT return products to the place of purchase. Do NOT return products to an Authorized Distributor. You may also want to consult our website: www.megacatch.com.

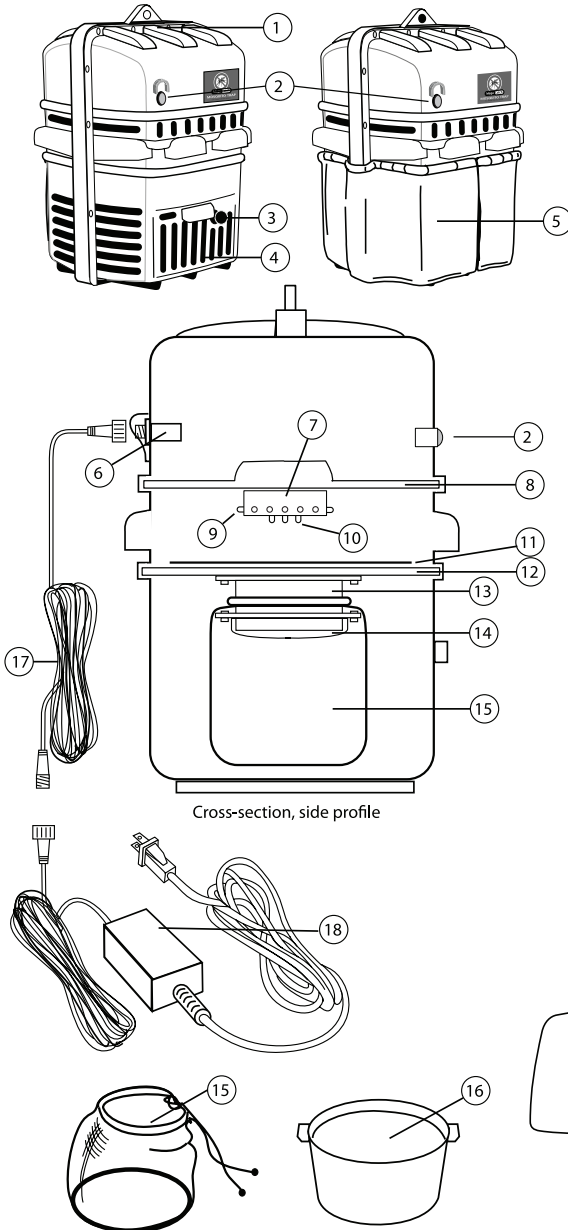
Specifications

Power Source
Input 100-240 VAC, 50/60 Hz
Output 12 VDC, 36 Watt

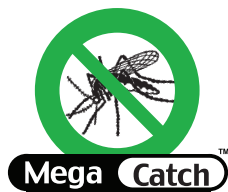
U.S. Design Patent No: 449,091
U.S. Patent Pending
U.S. Trade Mark Reg. No: 2,679,688
Canadian Trade Mark Reg. No: TMA 623,018



Parts List



Description	Part No.
1. Mega-Catch™ Pro 900 Series PREMIER Mosquito Trap	MCP-900
2. ON/OFF Switch	MC-P243.1
3. Key	MC-PU208
4. Lockable Door	MC-PU203
5. External Skirt	MC-PU112
6. Power Connection	MC-PU10
7. Control Box	MC-PU05
8. Top Plate	MC-PU205
9. U.V. Light Emitting Diodes (LEDs)	
10. Central LED Cluster	
11. Heater Element	MC-PU211
12. Bottom Plate	MC-PU206
13. Fan Unit	MC-PU210
14. Fan Safety Guard	MC-PU209
15. Catch Bag	MC-PU111
16. Liquid Catch Container	MC-PU204
17. 30ft Extension Cord	MC-PU8
18. Power Supply	MC-PU242.2



Product made in China for:
EnviroSafe Technologies International Limited
Unit 10, 6 Omega St, Albany
Auckland, New Zealand
info@megacatch.com www.megacatch.com

Mega-Catch™ is a trademark of EnviroSafe Technologies International Ltd.