

**Nutra Pure LLC**

Vancouver, WA 98685  
support@cbdpure.com  
(800) 240-9884  
Lic. #

**Sample: 09TRC004019.O3744**

Strain: SWIFT

Sample Received: 09/09/2019; Report Created: 09/19/2019

Leaf Inventory/Lot ID: ; Leaf Pre-Transfer Inventory/Lot ID:

Leaf Batch ID: ; Leaf Pre-Transfer Batch ID:

Leaf Manifest ID:

**SWIFT**

Other, Industrial Hemp  
External Batch ID: NP36



**ND**  
THC Potency

**288.43 mg/unit**  
CBD Potency

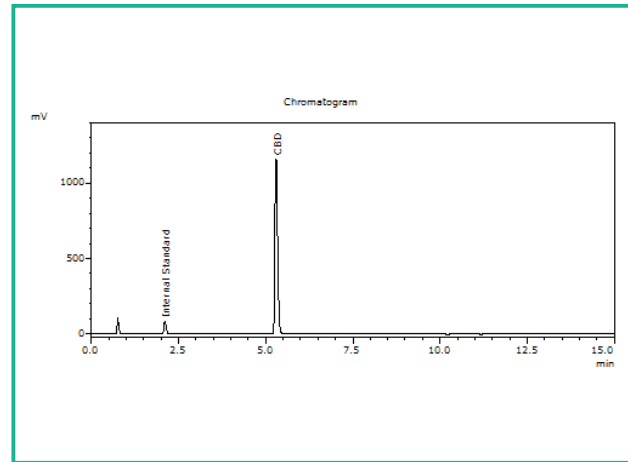
**288.43 mg/unit**  
Total Potency\*

## Cannabinoids

1 Unit = 5 mL, 5.442g

Analyte	Mass mg/unit	Mass mg/g
THCa	ND	ND
Δ9-THC	ND	ND
CBD	288.43	53.00
CBDa	ND	ND
CBN	ND	ND
Δ8-THC	ND	ND
THCV	ND	ND
CBDV	ND	ND
CBG	ND	ND
CBGa	ND	ND
CBC	ND	ND
<b>Total</b>	<b>288.43</b>	<b>53.00</b>

## Chromatogram



THC Potency = THCa \* 0.877 + Δ9-THC; CBD Potency = CBDa \* 0.877 + CBD; LOQ = Limit of Quantitation; Total Potency\* = Total THC + Total CBD. Unless otherwise stated all quality control samples performed within specifications established by the Laboratory.

908 N. Howard St., Suite 101

Spokane, WA

(509) 284-7522

http://traceanalytics.com/

Lic# 0014

*Aimee Soule*

Aimee Soule

Scientist I

Confident Cannabis

All Rights Reserved

support@confidentcannabis.com

(866) 506-5866

www.confidentcannabis.com



Nutra Pure LLC

Vancouver, WA 98685  
support@cbdpure.com  
(800) 240-9884  
Lic. #

Sample: 09TRC004019.O3744

Strain: SWIFT

Sample Received: 09/09/2019; Report Created: 09/19/2019  
Leaf Inventory/Lot ID: ; Leaf Pre-Transfer Inventory/Lot ID:  
Leaf Batch ID: ; Leaf Pre-Transfer Batch ID:  
Leaf Manifest ID:

SWIFT

Other, Industrial Hemp  
External Batch ID: NP36



Microbials

Pass

Analyte	Limit	Units	Status
Bile-Tolerant Gram-Negative Bacteria	10000	CFU/g	Pass
E. Coli	1	CFU/g	Pass
Salmonella	1	CFU/g	Pass

LOQ = Limit of Quantitation; TNC = Too Numerous to Count; Unless otherwise stated all quality control samples performed within specifications established by the Laboratory.

908 N. Howard St., Suite 101  
Spokane, WA  
(509) 284-7522  
<http://traceanalytics.com/>  
Lic# 0014



Aimee Soule  
Scientist I

Confident Cannabis  
All Rights Reserved  
support@confidentcannabis.com  
(866) 506-5866  
[www.confidentcannabis.com](http://www.confidentcannabis.com)



This product has been tested by Trace Analytics, Inc using valid testing methodologies and a quality system as required by state law. Values reported relate only to the product tested. Trace Analytics, Inc makes no claims as to the efficacy, safety or other risks associated with any detected or non-detected levels of any compounds reported herein. This Certificate shall not be reproduced except in full, without the written approval of Trace Analytics, Inc. Lic# 0014 - Foreign Matter (Visual Inspection) - Moisture (Moisture Analyzer) - Water Activity (Water Activity Meter) - Microbiological (3M Petrifilm/qPCR) - Potency (HPLC-UV) - Residual Solvents (GCMS) - Mycotoxins (ELISA). I-502 sampling is not performed by Trace Analytics.

**Nutra Pure LLC**

Vancouver, WA 98685  
support@cbdpure.com  
(800) 240-9884  
Lic. #

**Sample: 09TRC004019.O3744**

Strain: SWIFT

Sample Received: 09/09/2019; Report Created: 09/19/2019  
Leaf Inventory/Lot ID: ; Leaf Pre-Transfer Inventory/Lot ID:  
Leaf Batch ID: ; Leaf Pre-Transfer Batch ID:  
Leaf Manifest ID:

**SWIFT**

Other, Industrial Hemp  
External Batch ID: NP36



**Pesticides**

**Pass**

**No Residues Detected**

Analyte	LOQ	ULOQ	Limit	Mass	Status
---------	-----	------	-------	------	--------

LOQ = Limit of Quantitation; The reported result is based on a sample weight with the applicable moisture content for that sample; Unless otherwise stated all quality control samples performed within specifications established by the Laboratory.

908 N. Howard St., Suite 101  
Spokane, WA  
(509) 284-7522  
<http://traceanalytics.com/>  
Lic# 0014

Derek Laine  
Senior Scientist

Confident Cannabis  
All Rights Reserved  
support@confidentcannabis.com  
(866) 506-5866  
[www.confidentcannabis.com](http://www.confidentcannabis.com)



**Nutra Pure LLC**

Vancouver, WA 98685  
support@cbdpure.com  
(800) 240-9884  
Lic. #

**Sample: 09TRC004019.O3744**

Strain: SWIFT

Sample Received: 09/09/2019; Report Created: 09/19/2019

Leaf Inventory/Lot ID: ; Leaf Pre-Transfer Inventory/Lot ID:

Leaf Batch ID: ; Leaf Pre-Transfer Batch ID:

Leaf Manifest ID:

**SWIFT**

Other, Industrial Hemp  
External Batch ID: NP36



## Residual Solvents

**Pass**

Analyte	LOQ	Limit	Mass	Status
	PPM	PPM	PPM	
Acetone	1500.0	5000.0	ND	Pass
Benzene	0.6	2.0	ND	Pass
Butanes	1500.0	5000.0	ND	Pass
Chloroform	0.6	2.0	ND	Pass
Cyclohexane	1164.0	3880.0	ND	Pass
Dichloromethane	180.0	600.0	ND	Pass
Ethyl-Acetate	1500.0	5000.0	ND	Pass
Heptanes	1500.0	5000.0	ND	Pass
Hexanes	87.0	290.0	ND	Pass
Isopropanol	1500.0	5000.0	ND	Pass
Methanol	900.0	3000.0	ND	Pass
Pentane	1500.0	5000.0	ND	Pass
Propane	1500.0	5000.0	ND	Pass
Toluene	267.0	890.0	ND	Pass
Xylenes	1953.0	2170.0	ND	Pass

LOQ = Limit of Quantitation; The reported result is based on a sample weight with the applicable moisture content for that sample; Unless otherwise stated all quality control samples performed within specifications established by the Laboratory.

908 N. Howard St., Suite 101  
Spokane, WA  
(509) 284-7522  
<http://traceanalytics.com/>  
Lic# 0014

Aimee Soule  
Scientist I

Confident Cannabis  
All Rights Reserved  
support@confidentcannabis.com  
(866) 506-5866



This product has been tested by Trace Analytics, Inc using valid testing methodologies and a quality system as required by state law. Values reported relate only to the product tested. Trace Analytics, Inc makes no claims as to the efficacy, safety or other risks associated with any detected or non-detected levels of any compounds reported herein. This Certificate shall not be reproduced except in full, without the written approval of Trace Analytics, Inc. Lic# 0014 - Foreign Matter (Visual Inspection) - Moisture (Moisture Analyzer) - Water Activity (Water Activity Meter) - Microbiological (3M Petrifilm/qPCR) - Potency (HPLC-UV) - Residual Solvents (GCMS) - Mycotoxins (ELISA). I-502 sampling is not performed by Trace Analytics.

Nutra Pure LLC

Vancouver, WA 98685  
support@cbdpure.com  
(800) 240-9884  
Lic. #

Sample: 09TRC004019.O3744

Strain: SWIFT

Sample Received: 09/09/2019; Report Created: 09/19/2019

Leaf Inventory/Lot ID: ; Leaf Pre-Transfer Inventory/Lot ID:

Leaf Batch ID: ; Leaf Pre-Transfer Batch ID:

Leaf Manifest ID:

SWIFT

Other, Industrial Hemp  
External Batch ID: NP36



Heavy Metals

Pass

Analyte	Mass	LOQ	Limit	Status
	PPM	PPM	PPM	
Arsenic	ND	0.011	2.000	Pass
Cadmium	ND	0.007	0.820	Pass
Lead	ND	0.004	1.200	Pass
Mercury	ND	0.014	0.400	Pass

Notes: Subcontracted by Medicine Creek Analytics, 3700 Pacific HWY E, Ste 400, Fife, WA 98424

LOQ = Limit of Quantitation; The reported result is based on a sample weight with the applicable moisture content for that sample; Unless otherwise stated all quality control samples performed within specifications established by the Laboratory.

